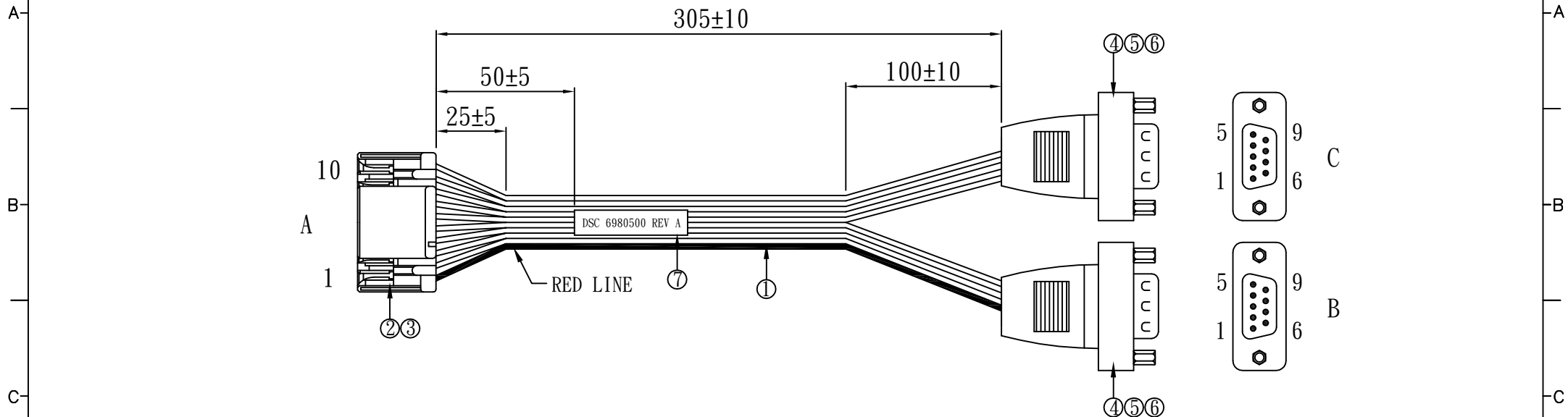
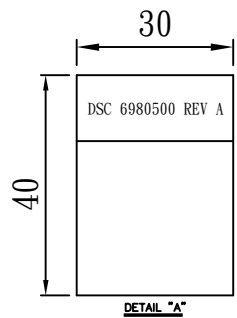


REV.	ECO. NO.	NO.	APPD
A	REL.	WU 01/25'13	
B	CHANGE SPEC	WU 03/05'13	



WIRING CHART

A	COLOR	B	C
1	RED	3	
2	GRAY	2	
3	GRAY	7	
4	GRAY	8	
5	GRAY	5	
6	GRAY	3	
7	GRAY	2	
8	GRAY	7	
9	GRAY	8	
10	GRAY	5	



NO.	ITEM.	Q' TY	DESCRIPTION	UL NO.
1	CABLE	1pcs	UL/CSA 2651 #28 10C FLAT CABLE PH:1.0	E209329
2	HOUSING	1pcs	1.25mm 1x10 JST GHR-10V-S, PBT UL94V-0	E60389
3	TERMINAL	10pcs	JST SSSL-002T-P0.2, PHOS. BRONZE, TIN PLATED	
4	CONN	2pcs	DB9 MALE SOLDER BLACK PIN G/F SHELL NI PLATED BLACK (94-V0) P/N: 010309-00002201 OR EQ	E334753
5	SHELL	2pcs	SHELL BLACK W/NUT #4-40UNC ABS UL94V-0 P/N:DKN9/9 OR EQ	
6	SCREW	4pcs	4.75*11.8 MATERIAL:FAST CUTTING COPPER NI PLATED	
7	LABEL	1pcs	TRANSPARENT POLYESTER SEE DETAIL "A"	

NOTES:

1. ALL DIMENSIONS ARE "MM".
2. THE PRODUCT MUST BE COMPLY WITH THE DIRECTIVE OF ROHS.
3. PACKAGE: 1PC/BAG.

X.: ±	.XX: ±	X': ±	.XX': ±	PART NO.(INTENDED USE) 6980500 REV A	TITLE: CABLE HARNESS, COM, 1.25mm Connector to 2X DB9 Male Panel Mount
.x: ±0.5	.xxx: ±	.x': ±	.xxx': ±		
APPD: WUFUHU 03/05'13				DWG NO.: GL-GH593	
CHKD: WUZUJIAN 03/05'13				SCALE	SHEET
DR: WUZUJIAN 03/05'13				NONE	1/1
				REV.	B



SCALE	SHEET	REV.
NONE	1/1	B