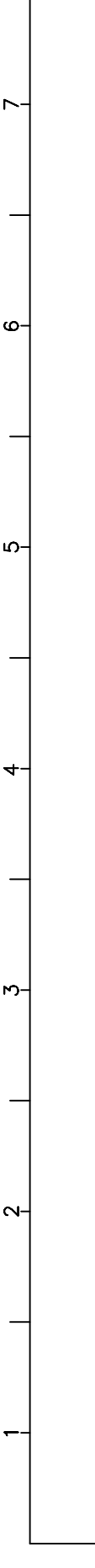


REV.	ECO. NO.	APPD
A		JHONNY 07/28'16



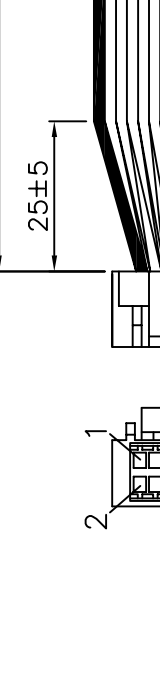
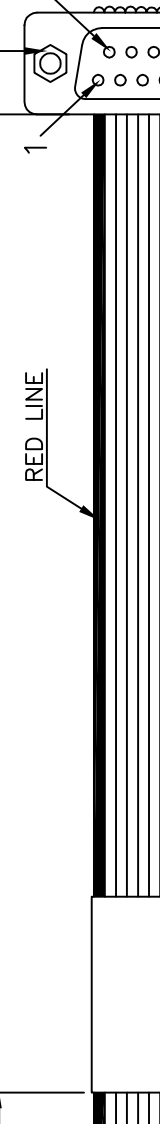
305±10

100±5

25±5

RED LINE

DSC 6980517 REV A



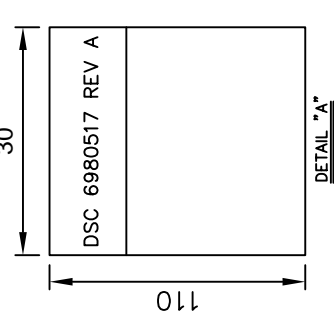
J1: PIN 11~19 AND 30~37 ARE EMPTY.

10	24	29
GRAY	GRAY	GRAY
GRAY	5	10
GRAY	23	28
GRAY	4	9
GRAY	22	27
GRAY	3	8
GRAY	21	26
GRAY	2	7
GRAY	20	25
RED	1	6
J1	J2	J2

20	19	18	17	16	15	14	13	12	11	J1	J2
GRAY	GRAY	GRAY	GRAY	GRAY	GRAY	GRAY	GRAY	GRAY	GRAY	GRAY	GRAY
J1	J2	J2	J2	J2	J2	J2	J2	J2	J2	J2	J2

- NOTES:
- ALL DIMENSIONS ARE "MM".
 - ANY OPEN, MISWIRING, SHORT & INTERMITTENT ARE NOT PERMITTED.
 - Connection Resistance : 2.0Ω
Insulation Resistance : 20MΩ
Hi-POT Voltage : 300V DC
Hi-POT Duration : 10ms
 - THE PRODUCT MUST BE COMPLY WITH THE DIRECTIVE OF ROHS.
 - PACKAGE:1PC/BAG.

No.	ITEM	Q'TY	DESCRIPTION	UL NO.
5	LABEL	1PC	W=30.0MM, L=110.0MM, CONTENT: SEE "A"	
4	D-SUB+ SCREWS	1SETS	IDC D-SUB 37 FEMALE W/SR, COLOR:BLACK WITH 4#40 HEX SCREWLOCK 4.75X11.8MM	
3	CONTACT	20PCS	MATERIAL: PHOSPHOR BRONZE NICKEL UNDERCOATED, SELECTIVE GOLD PLATED WIRE RANGE: #30~#26, JST P/N:SGHD-002GA-P0.2	
2	20P HOUSING	1PC	MATERIAL: PBT, UL94V-0, COLOR: NATURAL WHITE PITCH: 1.25MM, 2X10 JST P/N:GHDR-20V-S	E60389
1	FLAT CABLE	1PC	UL2651#28x20C, PITCH: 1.27MM, JACKET: PVC, COLOR: GRAY	E209329



TITLE: CABLE HARNESS DATA ACQUISITION 1.25MM CONNECTOR TO IDC DB37F	
PART NO.(INTENDED USE) 6980517 REV A	APPD: WUFUHU 07/28'16
CHKD: WUZUJIAN 07/28'16	DR: JASON 07/28'16
DWG NO.: GL-GH789	
SCALE(SHEET REV.) NONE 1/1 A	

