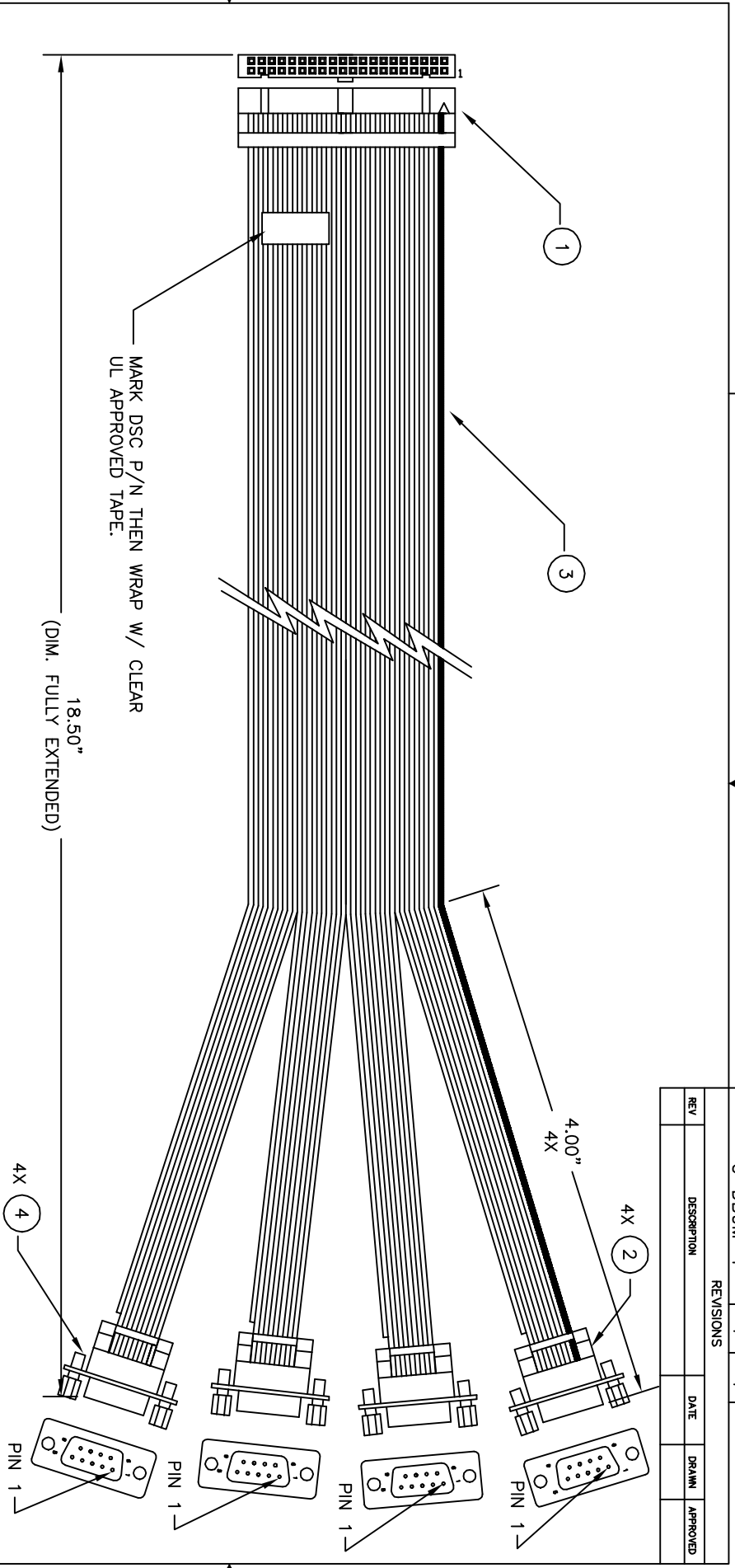


REVISIONS				
REV	DESCRIPTION	DATE	DRAWN	APPROVED



- NOTES:
1. THIS DOCUMENT CONTAINS CONFIDENTIAL INFORMATION THAT IS OWNED BY DIAMOND SYSTEMS CORPORATION AND MAY NOT BE COPIED, DISCLOSED OR OTHERWISE USED WITHOUT THE EXPRESSED WRITTEN CONSENT OF D.S.C
 2. CABLE MUST MEET UL SPECIFICATIONS

ITEM	DESC	QTY	UM	NOTE
4	FEMALE SCREW LOCK	4	EA	
3	40 COND. RIBBON CABLE	18.00	IN	
2	9 PIN MALE D-SUB	1	EA	
1	40 PIN IDC SOCKET W/KEY AND STRAIN RELIEF	4	EA	

UNLESS OTHERWISE SPECIFIED DIMENSIONS ARE IN INCHES		DO NOT SCALE DRAWING	
±.015 BEND TO A BEND	±.010 FEATURE TO AN EDGE	APPROVALS	DATE
±.005 FEATURE TO A FEATURE	±.500 DEGREE FOR ANGLES	JDM	04/14/00
MATERIAL		CHECKED	
FINISH		ENGR	
MFG			

DIAMOND SYSTEMS CORPORATION 450 SAN ANTONIO ROAD - PALO ALTO, CA 94306		ASSMELY, CABLE, RIBBON 40 POS. WITH 4 DB9	
SIZE	DWG NO.	SCALE	DOC REV.
B	C-DB9M-4	NONE	A
THIRD ANGLE PROJECTION		SHEET 1	OF 1
REV	2		