

4

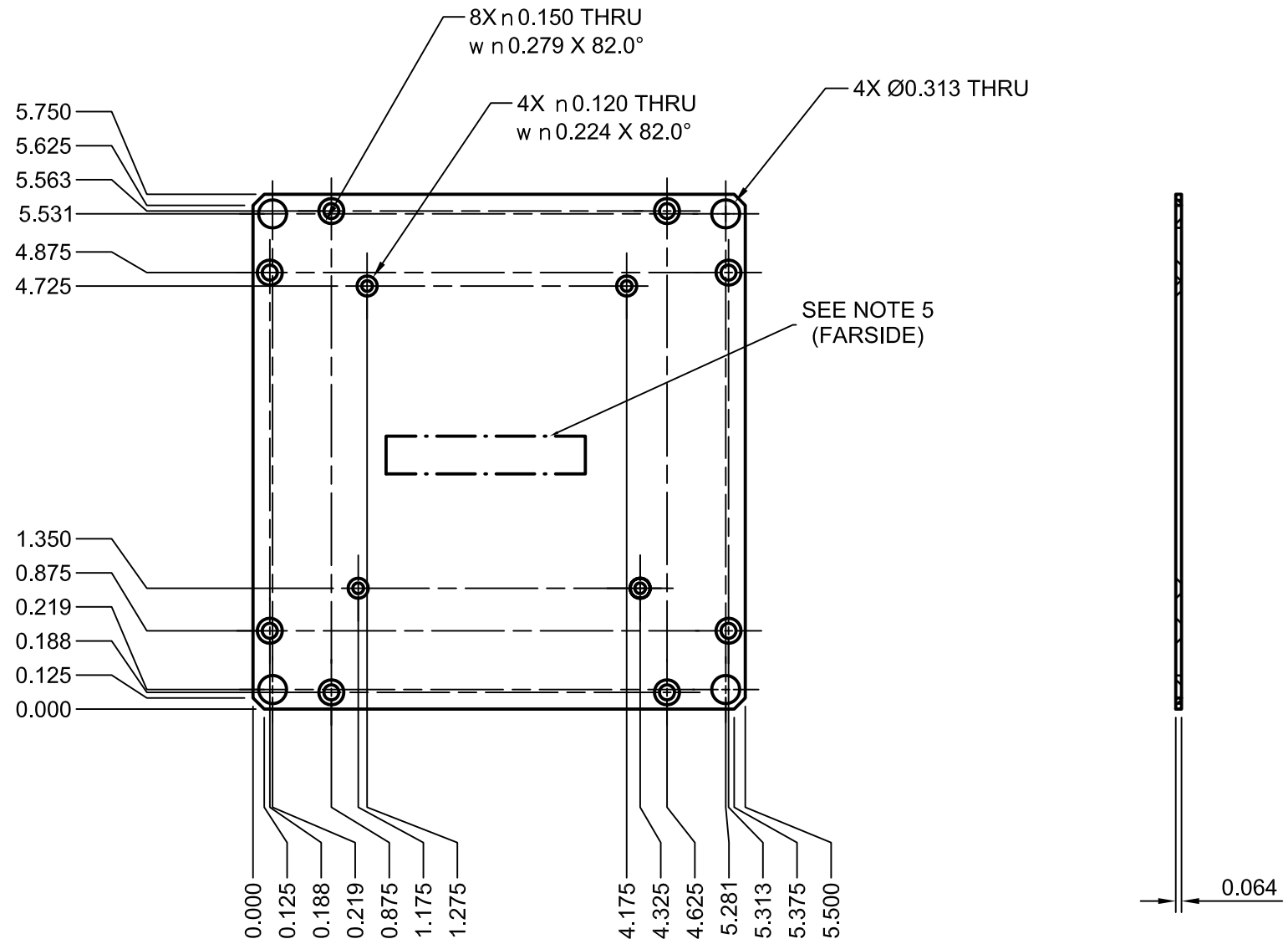
3

2

1

THIS DOCUMENT CONTAINS CONFIDENTIAL INFORMATION THAT IS OWNED BY DIAMOND SYSTEMS CORPORATION AND MAY NOT BE COPIED, DISCLOSED OR OTHERWISE USED WITHOUT THE EXPRESSED WRITTEN CONSENT OF D.S.C

DWG NO	781105	SHT 1	REV A	1
REVISIONS				
REV	DESCRIPTION	DATE	DRAWN	APPROVED
A	PRODUCTION RELEASE	11/28/05	MHL_III	



- NOTES:
- 1) MATERIAL: 14 ga, (.064" Thk) ALUMINUM; 5052-H32.
  - 2) Finish:  
Chromate conversion etch & Alodine; CLEAR
  - 3) Break sharp edges and deburr.
  - 4) Packaging: Package each completed part individually to preserve aesthetic appearance and prevent mechanical deformation during shipment and storage.
  - 5) Permanently MARK with PART NUMBER and Current REV Letter in .12 minimum tall characters. Locate and orient approximately as shown.

UNLESS OTHERWISE SPECIFIED DIMENSIONS ARE IN INCHES ±.015 BEND TO A BEND ±.010 FEATURE TO A BEND ±.010 FEATURE TO AN EDGE ±.005 FEATURE TO A FEATURE ±.005 FEATURE ±.500 DEGREE FOR ANGLES	DO NOT SCALE DRAWING		DIAMOND SYSTEMS CORPORATION 8430-D CENTRAL AVENUE NEWARK, CA 94560		
	APPROVALS	DATE	PLATE, WALL MOUNT		
	DRAWN M. Loper	11/28/05			
	CHECKED		SIZE B	DWG NO 781105	REV A
MATERIAL SEE NOTES	ENGR	SCALE NONE	DOC REV: A	THIRD ANGLE PROJECTION	SHEET 1 OF 1
FINISH SEE NOTES	MFG				