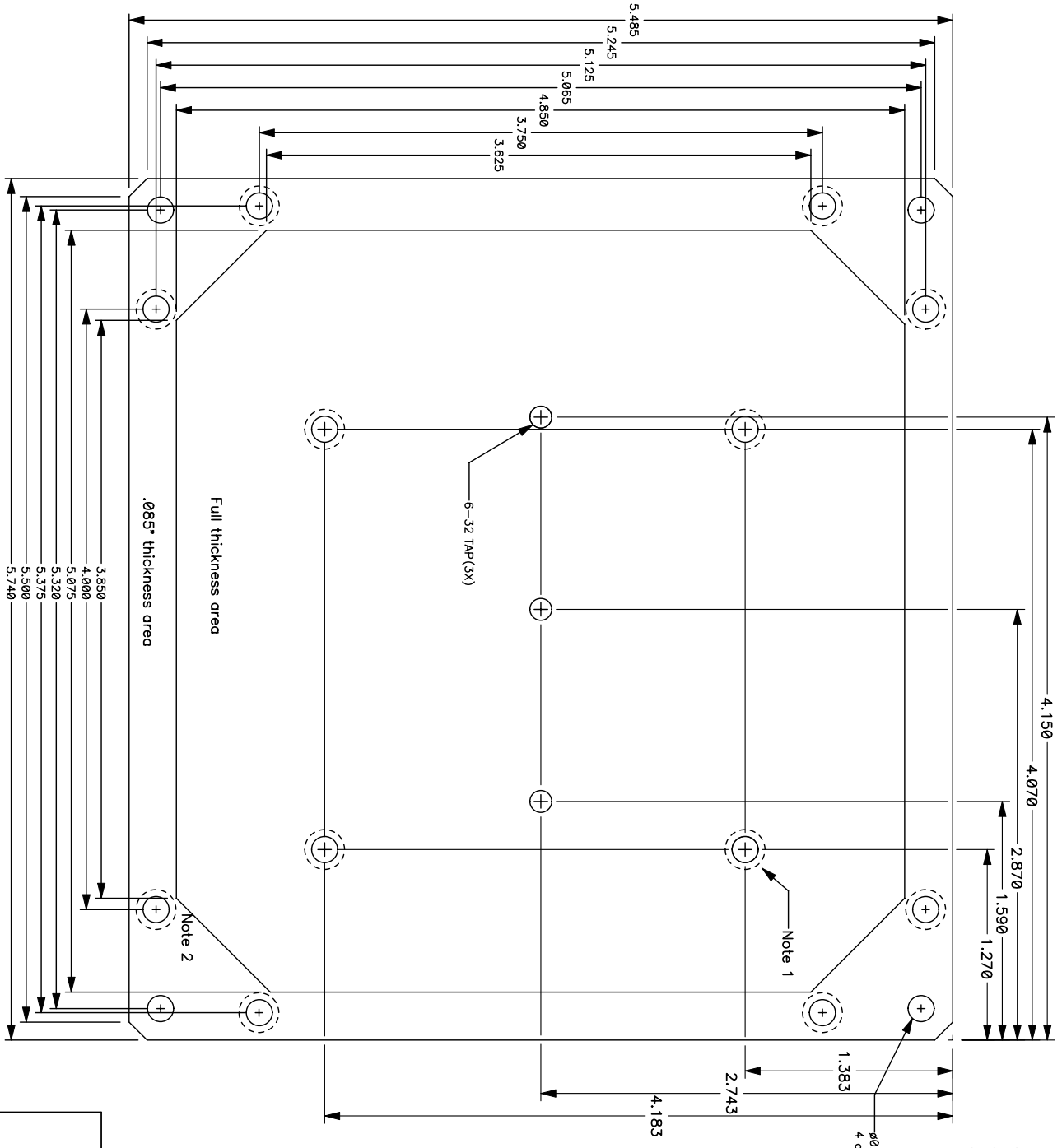


FRONT VIEW Top Panel Fabrication

PNL-AUR-01 Rev A
 Aurora Panel I/O Board
 (c) 2011 Diamond Systems Corp.
 www.diamondsystems.com
 (650) 810-2500

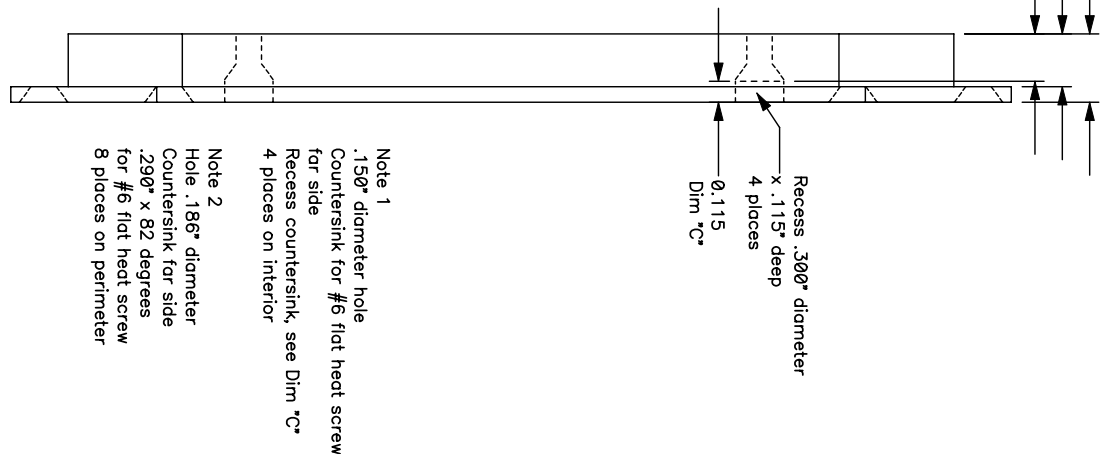
DRAWING NOT TO SCALE
 Material: Aluminum 5052 or equiv., 16 gauge (.064")
 Tolerances: +/- .003" all dims
 All dimensions in inches
 Finish: chromate conversion etch and diodine clear
 Paint top face only, Pandora Black
 HBW light texture



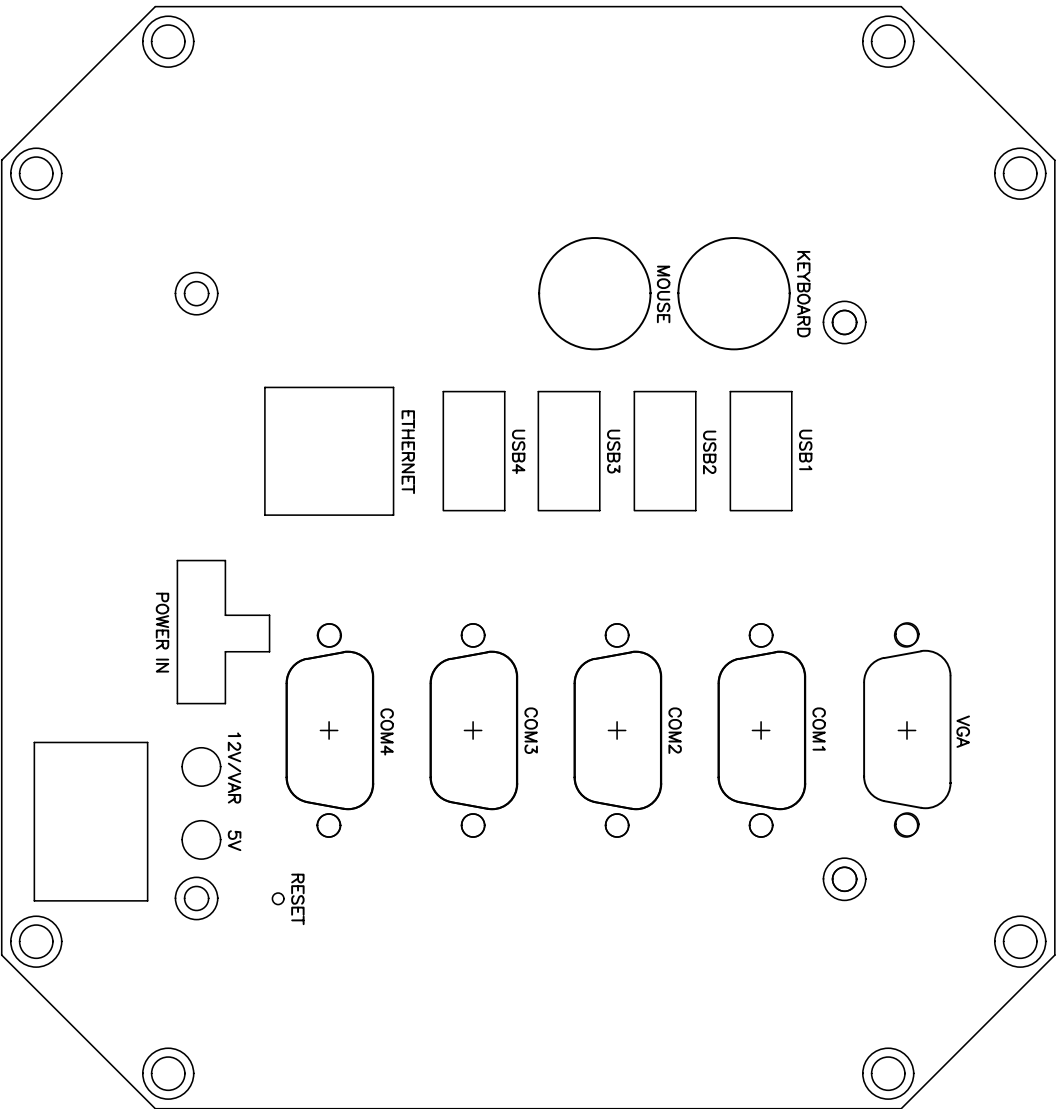
FRONT VIEW

Bottom Panel Fabrication

PNL-AUR-01 Rev A
 Aurora Panel I/O Board
 (c) 2011 Diamond Systems Corp.
 www.diamondsystems.com
 (650) 810-2500



DRAWING NOT TO SCALE
 Material: Aluminum 5052 or equiv., 3/8" (.375") thick
 Tolerances: +/- .003" all dims
 All dimensions in inches
 Finish: chromate conversion etch and diodine clear
 No paint



FRONT VIEW

Top Panel Silkscreen

CASE AND CUTOFF OUTLINES
 SHOWN FOR REFERENCE ONLY.
 DO NOT PRINT CASE AND CUTOFF OUTLINES.
 PRINT ONLY TEXT.

DRAWING NOT TO SCALE

Text Font: Helvetica
 Text Height: 100 mil
 Text Width: 10 mil
 Text Color: White