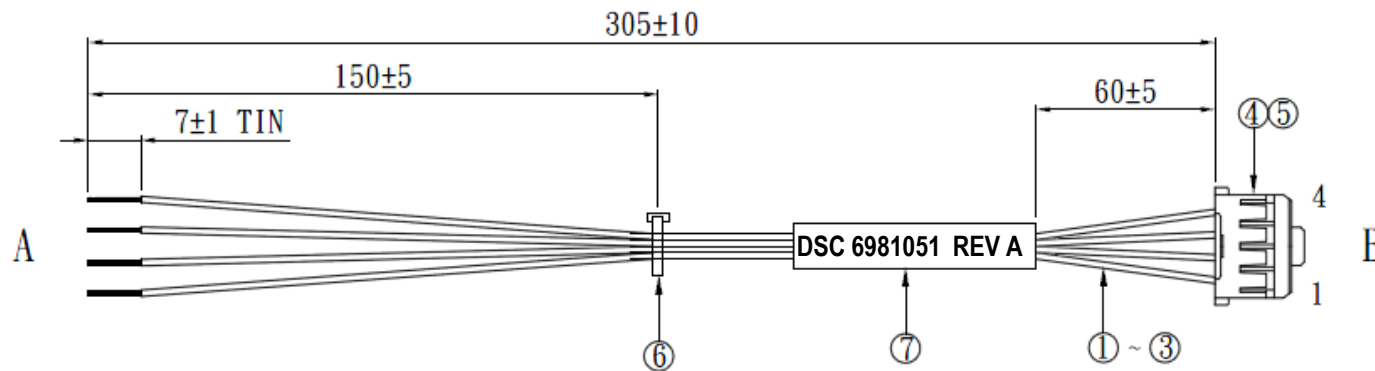
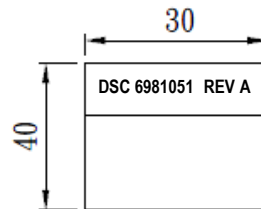


REV.	ECO. NO.	APPD
A	REL.	YIER 12/23'10
B	Remove connector A.	YIER 1/19'11
C	CHANGE SPEC.	YIER 4/13'11



WIRING CHART

A	DESC. / COLOR	B
TIN	VAR IN / YELLOW	4
TIN	GND / BLACK	3
TIN	GND / BLACK	2
TIN	+5V / RED	1



DETAIL "A"

NO.	ITEM.	Q'TY	DESCRIPTION	UL / CSA No.
1	WIRE	0.315m	UL/CSA 1007 #24 RED	E209329
2	WIRE	0.630m	UL/CSA 1007 #24 BLACK	E209329
3	WIRE	0.315m	UL/CSA 1007 #24 YELLOW	E209329
4	HOUSING	1PCS	Molex 2.0mm 35507-0400	E115256
5	TERMINAL	4PCS	Molex 50212-8100 (Loose) / 50212-8000 (Reel)	E115256
6	CABLE TIE	1PCS	NATURE COLOR 2.5*100mm P/N:GT-100	
7	LABEL	1PCS	TRANSPARENT POLYESTER SEE DETAIL "A"	

NOTES:

- ALL DIMENSIONS ARE "MM".
- THE PRODUCT MUST BE COMPLY WITH THE DIRECTIVE OF ROHS.
- PACKAGE: 1PC/ BAG.



X:±	.XX:±	X':±	.XX':±	PART NO.(INTENDED USE) <b>6981051 REV A</b>	TITLE: CABLE, POWER 4PIN HEADER TO FLYING LEADS
X:±0.5	.XXX:±	.X':±	.XXX':±	APPD: WUFUHU 4/13'11	DWG NO.: GL-GH511
				CHKD: HOWARD 4/13'11	SCALE SHEET REV. NONE 1/1 C
				DR: XINGJIU 4/13'11	

