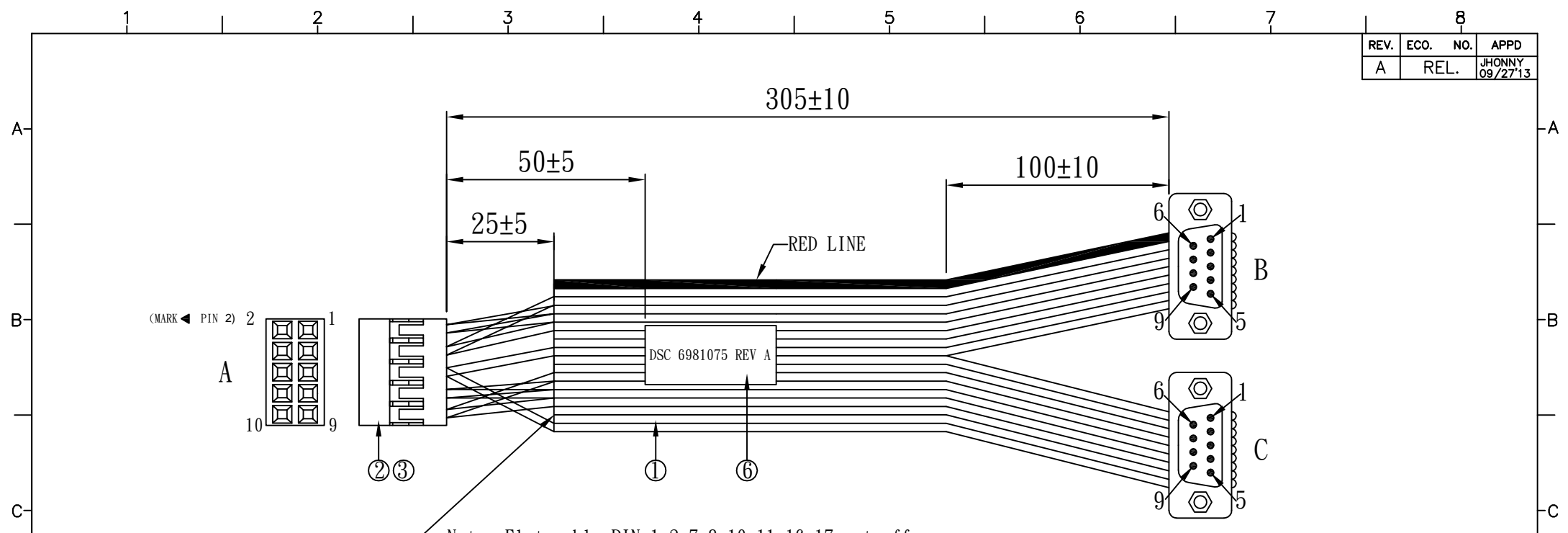


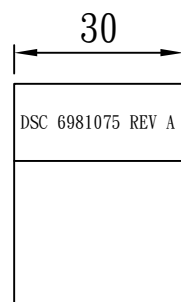
REV.	ECO. NO.	APPD
A	REL.	JHONNY 09/27'13



Notes: Flat cable PIN 1, 2, 7, 8, 10, 11, 16, 17 cut off

WIRING CHART

A	COLOR	B	C	
1	RED	3		FLAT CABLE LINE 5
2	GRAY	7		FLAT CABLE LINE 4
3	GRAY	2		FLAT CABLE LINE 3
4	GRAY	8		FLAT CABLE LINE 6
5	GRAY	5		FLAT CABLE LINE 9
6	GRAY		5	FLAT CABLE LINE 18
7	GRAY		3	FLAT CABLE LINE 14
8	GRAY		7	FLAT CABLE LINE 13
9	GRAY		2	FLAT CABLE LINE 12
10	GRAY		8	FLAT CABLE LINE 15



DETAIL "A"

NO.	ITEM.	Q'TY	DESCRIPTION	UL No.
1	WIRE:	1PCS	UL2651 #28 18P GREY PH:1.27MM	E209329
2	HOUSING:	1PCS	A2005H02-2*5P 2MM UL 94V-1 OR MOLEX 51110-1050	E144544
3	TERMINAL:	10PCS	A2005TOB-00 GOLD OVER NICKEL OR MOLEX 50394-8100	
4	CONN:	2PCS	6224-09-MNB02 IDC D-SUB 09 MALE BLACK PBT UL94V-0 WITH STRAIN RELIEF	
5	SCREW:	4PCS	HEX NUT #4-40UNC	
6	LABEL:	1PCS	TRANSPARENT POLYESTER SEE DETAIL "A"	

X.:±	.XX:±	X*:±	.XX*:±	PART NO.(INTENDED USE) 6981075 REV A	TITLE: CABLE HARNESS, COM, 2mm Connector to 2XDB9 MALE PANEL MOUNT
.x:±0.5	.xxx:±	.X*:±	.xxx*:±		
APPD: JHONNY 09/27'13				DWG NO.: GL-GH626	
CHKD: WUZUJIAN 09/27'13				SCALE SHEET REV.	
DR: YREYVN 09/27'13				NONE 1/1 A	

- NOTES:
1. ALL DIMENSIONS ARE "MM".
 2. THE PRODUCT MUST BE COMPLY WITH THE DIRECTIVE OF ROHS.
 3. PACKAGE: 1PC/BAG.

