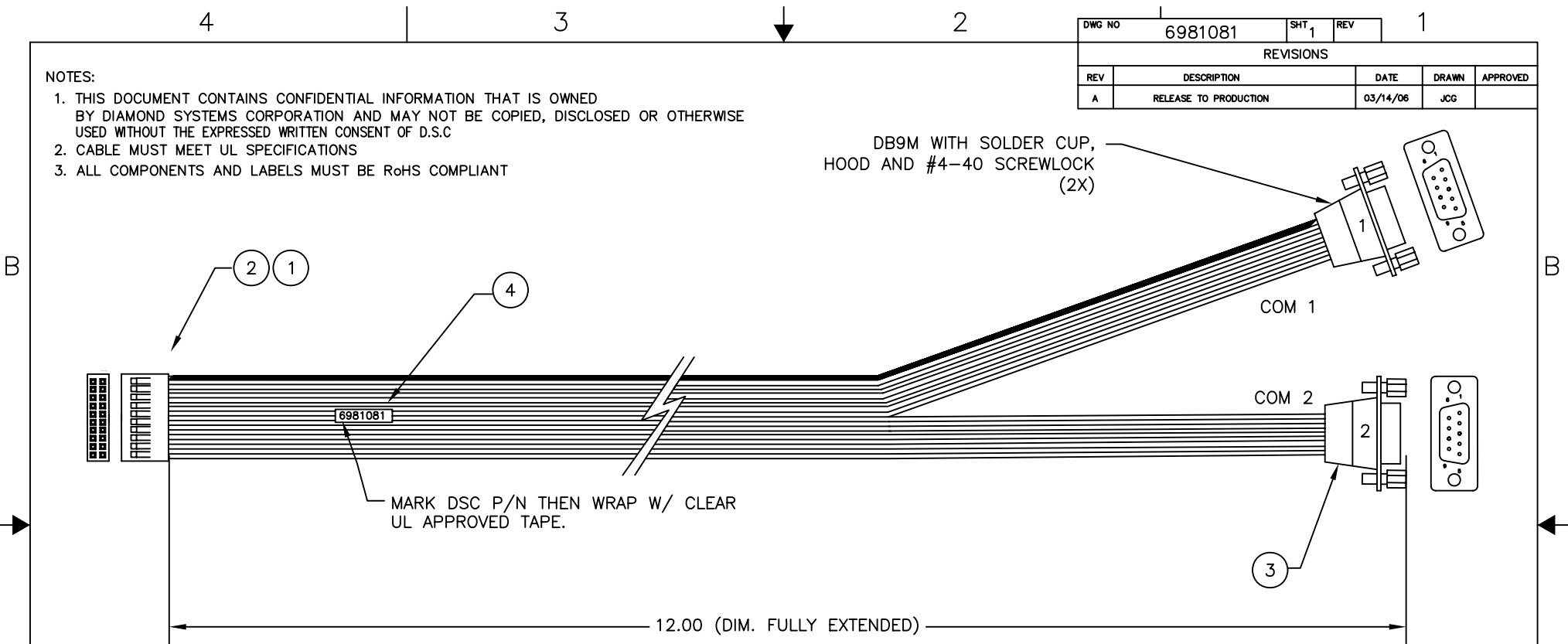


DWG NO	6981081	SHT	1	REV	1
REVISIONS					
REV	DESCRIPTION	DATE	DRAWN	APPROVED	
A	RELEASE TO PRODUCTION	03/14/06	JCG		

NOTES:

- THIS DOCUMENT CONTAINS CONFIDENTIAL INFORMATION THAT IS OWNED BY DIAMOND SYSTEMS CORPORATION AND MAY NOT BE COPIED, DISCLOSED OR OTHERWISE USED WITHOUT THE EXPRESSED WRITTEN CONSENT OF D.S.C
- CABLE MUST MEET UL SPECIFICATIONS
- ALL COMPONENTS AND LABELS MUST BE RoHS COMPLIANT

DB9M WITH SOLDER CUP, HOOD AND #4-40 SCREWLOCK (2X)



MARK DSC P/N THEN WRAP W/ CLEAR UL APPROVED TAPE.

12.00 (DIM. FULLY EXTENDED)

WIRING DIAGRAM

COM1		
CONNECTOR ITEM 2	ITEM 2	DB9-MALE ITEM 3
1	DCD1	1
2	DSR1	6
3	RXD1	2
4	RST1	7
5	TXD1	3
6	CTS1	8
7	DTR1	4
8	RI1	9
9	GND	5
10	NC	CUT END

COM2		
CONNECTOR ITEM 2	ITEM 2	DB9-MALE ITEM 3
11	DCD2	1
12	DSR2	6
13	RXD2	2
14	RST2	7
15	TXD2	3
16	CTS2	8
17	DTR2	4
18	RI2	9
19	GND	5
20	NC	CUT END

4	RIBBON CABLE, 1MM 20 COND. GRAY			12	IN	
3	CONNECTOR DB-9 MALE			2	EA	
2	GRID WIRE TO BOARD 2x10 2mm	51110-2050	MOLEX	1	EA	
1	TERMINAL CRIMP	50394-8100	MOLEX	6	EA	
ITEM	DESC	PNO	VENDOR	QTY	UM	NOTE
UNLESS OTHERWISE SPECIFIED DIMENSIONS ARE IN INCHES ±.015 BEND TO A BEND ±.010 FEATURE TO A BEND ±.010 FEATURE TO AN EDGE ±.005 FEATURE TO A FEATURE ±.005 FEATURE ±.500 DEGREE FOR ANGLES		DIAMOND SYSTEMS CORPORATION 450 SAN ANTONIO ROAD - PALO ALTO, CA 94306		CABLE, SERIAL, 2mm TO 2x DB9M		
DO NOT SCALE DRAWING		APPROVALS	DATE			
DRAWN		JCG	03/14/06			
MATERIAL		CHECKED		SIZE	DWG NO	REV
FINISH		ENGR		B	6981081	A
		MFG		SCALE	NONE	DOC REV: A
				THIRD ANGLE PROJECTION		SHEET 1 OF 1