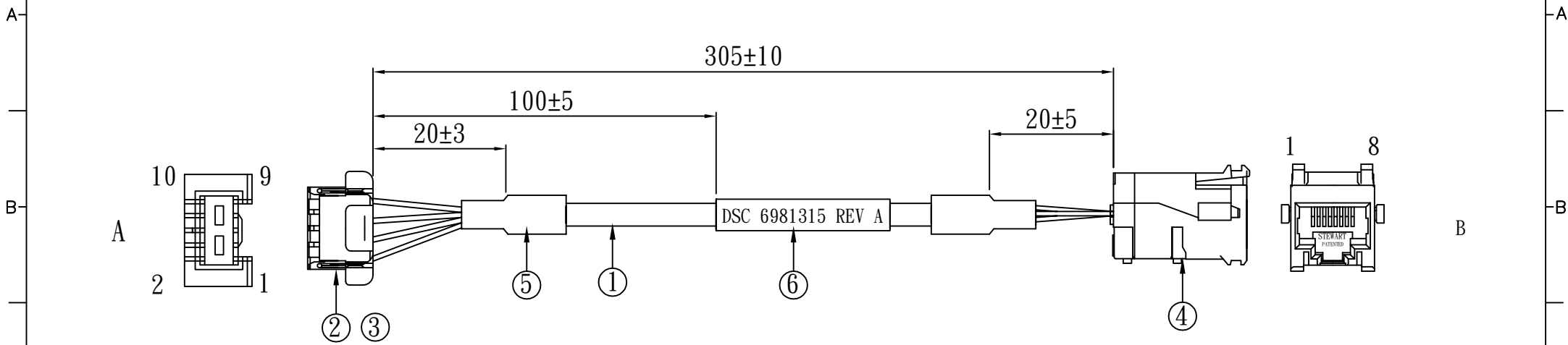
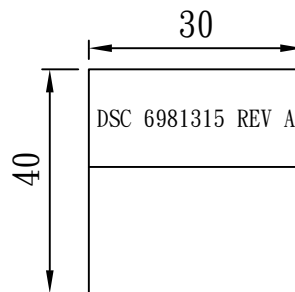


REV.	ECO.	NO.	APPD
A	REL.	WU	7/26'13



WIRING CHART

A	COLOR		B
1	WHITE/ORANGE	TWISTED PAIR	1
3	ORANGE		2
5	BLUE	TWISTED PAIR	4
7	WHITE/BLUE		5
2	WHITE/GREEN	TWISTED PAIR	3
4	GREEN		6
6	WHITE/BROWN	TWISTED PAIR	7
8	BROWN		8



DETAIL "A"

NO.	ITEM.	Q'TY	DESCRIPTION	UL / CSA No.
1	CABLE	0.325M	CABLE: CAT. 5e UTP #24*4PR JACKET: GRAY, OD:Ø5.3	E119932
2	HOUSING	1pc	1.5mm 2x5 DUAL ROWS JST ZPDR-10V-S	E60389
3	TERMINAL	8pcs	JST SZPD-002F-P0.3	E60389
4	KEYSTONE	1pc	KEYSTONE BEL-STEWART SS-82000-002	
5	H. S TUBE	2pc	6Ø*15 BLACK F32	
6	LABEL	1pc	TRANSPARENT POLYESTER SEE DETAIL "A"	

NOTES:

1. ALL DIMENSIONS ARE "MM".
2. THE PRODUCT MUST BE COMPLY WITH THE DIRECTIVE OF ROHS.
3. PACKAGE: 1PC/BAG.



x.:±	.xx:±	x°.±	.xx°.±	PART NO.(INTENDED USE) 6981315 REV A	TITLE: CABLE HARNESS, GigE, 1.5mm Connector to RJ45 Panel Mount
.x:±0.5	.xxx:±	.x°.±	.xxx°.±	APPD: WUFUHU 07/26'13	DWG NO.: GL-GH551
				CHKD: WUZUJIAN 07/26'13	SCALE SHEET REV. NONE 1/1 A
				DR: MERVYN 07/26'13	



SCALE	SHEET	REV.
NONE	1/1	A