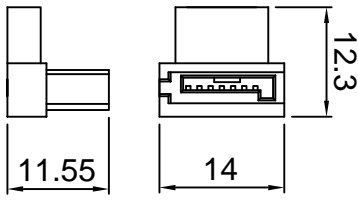
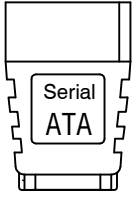
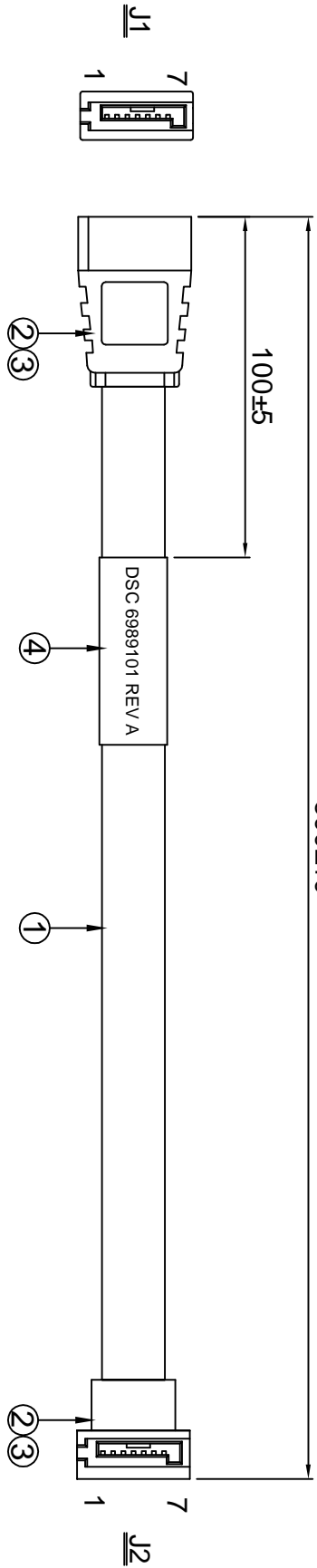


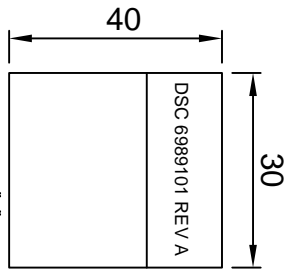
REV.	ECO. NO.	APPD.
A	REL.	JHONNY 09/0314

500±10



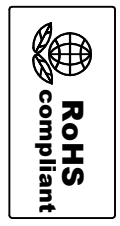
WIRE CONNECTION TABLE

J1	WIRE	J2
1	—	1
2	—	2
3	—	3
4	—	4
5	—	5
6	—	6
7	—	7



No.	ITEM	Q'TY	DESCRIPTION	UL NO.
4	LABEL	1PC	W=30.0MM, L=40.0MM, CONTENT:SEE "A"	
3	PVC	15g	3SP PVC BLACK	
2	SATA CONN	2PCS	SATA 7P FEMALE, NO LOCK, BLACK	
1	CABLE	1PC	SATA CABLE UL2725 26AWG(0.3/2C+A+0.3/2D)*2 +RED JACKET:PVC, OD=2.2*7.8±0.15mm	UL NO.

- NOTES:
1. ALL DIMENSIONS ARE "MM".
 2. ANY OPEN, MISWIRING, SHORT & INTERMITTENT ARE NOT PERMITTED.
 3. Connection Resistance : 5.0Ω
Insulation Resistance : 5MΩ
Hi-POT Voltage : 300V DC
Hi-POT Duration : 10ms
 4. THE PRODUCT MUST BE COMPLY WITH THE DIRECTIVE OF ROHS.
 5. PACKAGE: 1PC/BAG.



CHKD: WUZUJIAN 09/0314	DR: YHTJH 09/0314	SCALE: NONE	SHEET: 1/1	REV: A
PART NO.(INTENDED USE): 6989101 REV A		TITLE: CABLE HARNESS, SATA 7P TO SATA 7P		
APPD: JHONNY 09/0314		DWG NO.: GL-GH720		