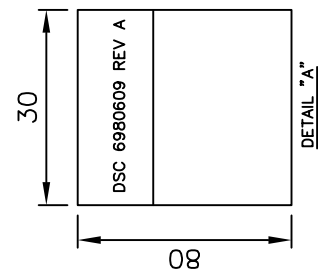
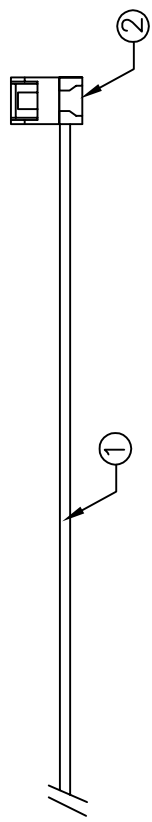
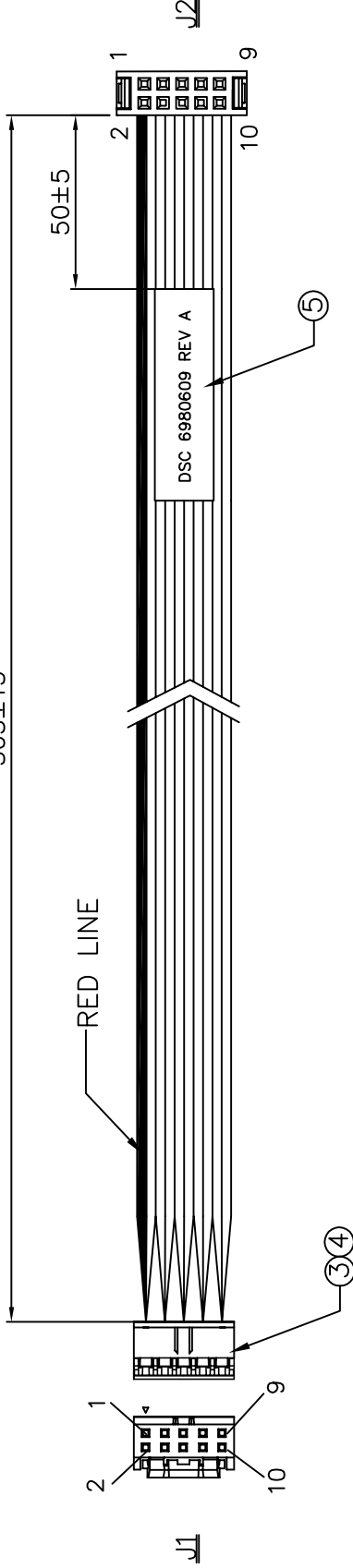


REV. A	ECC. NO.	APPD	8
	REL.	LARRY	
		02/06'20	

305±15



10	GRAY	10
9	GRAY	9
:	GRAY	:
:	GRAY	:
:	GRAY	:
2	GRAY	2
1	RED	1
J1	WIRE COLOR	J2
WIRE CONNECTION TABLE		

No.	ITEM	Q'TY	DESCRIPTION
5	LABEL	1PC	W=30.0MM, L=80.0MM, CONTENT SEE "A"
4	CRIMP TERMINAL	10PCS	CRIMP CONTACT FCI P/N 77138-001LF
3	10P HOUSING	1PC	2MM 2X5P BLACK FCI P/N 10073599-010LF
2	10P HOUSING	1PC	I.D.C. SOCKET 20P PH=2.0MM W/O NOSE BLACK
1	FLAT CABLE	1PC	UL2651#28X10C, PITCH: 1.0MM, JACKET: PVC, COLOR: GRAY

- NOTES:
- ALL DIMENSIONS ARE "MM".
 - ANY OPEN, MISWIRING, SHORT & INTERMITTENT ARE NOT PERMITTED.
 - CONDUCTION RESISTANCE: 2Ω MAX
INSULATION RESISTANCE: 20MΩ MIN/DC 300V
 - THE PRODUCT MUST BE COMPLY WITH THE DIRECTIVE OF RoHS.
 - PACKAGE: 1PC/BAG.

X:±	.XX:±	X':±	.XX':±	PART NO.(INTENDED USE)	TITLE:
.X:±0.5	.XXX:±	.X':±	.XXX':±	6980609 REV A	CABLE, FCI 10P TO IDC10P 2MM, 12"
				APPD:	LARRY 02/06'20
				CHKD:	WUZUJIAN 02/06'20
				DR:	AARON 02/06'20
				DWG NO.:	GL-YT0609
				SCALE	SHEET 1/1
				REV.	A