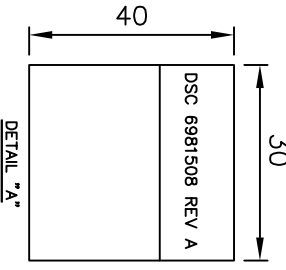
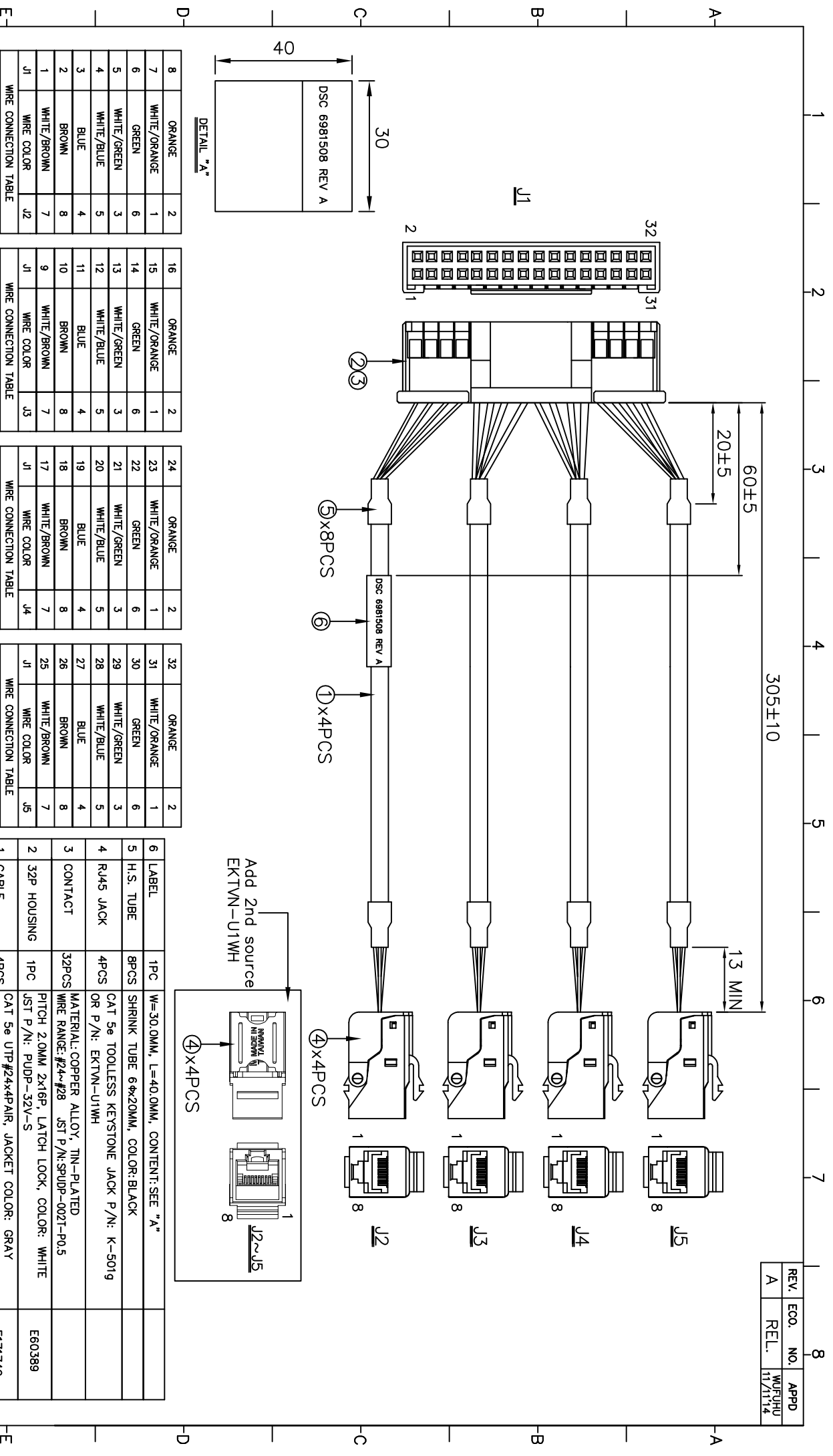


REV.	Eco.	NO.	APPD
A	REL.	11/7/14	WUFUHU



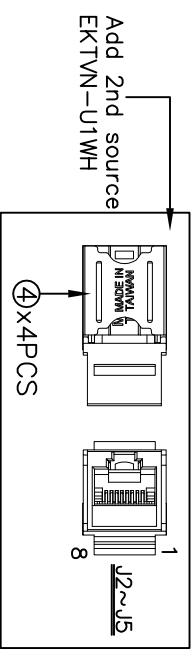
8	ORANGE	2
7	WHITE/ORANGE	1
6	GREEN	6
5	WHITE/GREEN	3
4	WHITE/BLUE	5
3	BLUE	4
2	BROWN	8
1	WHITE/BROWN	7
J1	WIRE COLOR	J2

16	ORANGE	2
15	WHITE/ORANGE	1
14	GREEN	6
13	WHITE/GREEN	3
12	WHITE/BLUE	5
11	BLUE	4
10	BROWN	8
9	WHITE/BROWN	7
J1	WIRE COLOR	J3

24	ORANGE	2
23	WHITE/ORANGE	1
22	GREEN	6
21	WHITE/GREEN	3
20	WHITE/BLUE	5
19	BLUE	4
18	BROWN	8
17	WHITE/BROWN	7
J1	WIRE COLOR	J4

32	ORANGE	2
31	WHITE/ORANGE	1
30	GREEN	6
29	WHITE/GREEN	3
28	WHITE/BLUE	5
27	BLUE	4
26	BROWN	8
25	WHITE/BROWN	7
J1	WIRE COLOR	J5

No.	ITEM	QTY	DESCRIPTION	UL NO.
1	CABLE	4PCS	CAT 5e UTP#24x4PAIR, JACKET COLOR: GRAY	E1717740
2	32P HOUSING	1PC		E60389
3	CONTACT	32PCS	MATERIAL: COPPER ALLOY, TIN-PLATED WIRE RANGE: #24~#28 JST P/N:SPUDP-0021-PO.5	
4	RJ45 JACK	4PCS	CAT 5e TOOLLESS KEYSTONE JACK P/N: K-501g OR P/N: EKTVN-U1WH	
5	H.S. TUBE	8PCS	SHRINK TUBE 6Φx20MM, COLOR:BLACK	
6	LABEL	1PC	W=30.0MM, L=40.0MM, CONTENT: SEE "A"	



- NOTES:
1. ALL DIMENSIONS ARE "MM".
 2. ANY OPEN, MISWIRING, SHORT & INTERMITTENT ARE NOT PERMITTED.
 3. Connection Resistance : 2.0Ω, Insulation Resistance : 20MΩ
HI-POT Voltage : 300V DC, HI-POT Duration : 10MS
 4. THE PRODUCT MUST BE COMPLY WITH THE DIRECTIVE OF ROHS.
 5. PACKAGE: 1PC/BAG.



X:±	XX:±	X':±	XX':±
.X:±0.5	.XXX:±	.X':±	.XXX':±
PART NO.(INTENDED USE) 6981508 REV A		TITLE: CABLE HARNESS, GIG Connector to RJ45 Panel Mount	
APPD:	WUFUHU 11/11/14	DWG NO.: GL-TC1508	
CHKD:	WUZUJIAN 11/11/14	SCALE SHEET REV.	
DR:	WUZUJIAN 11/11/14	NONE 1/1 A	