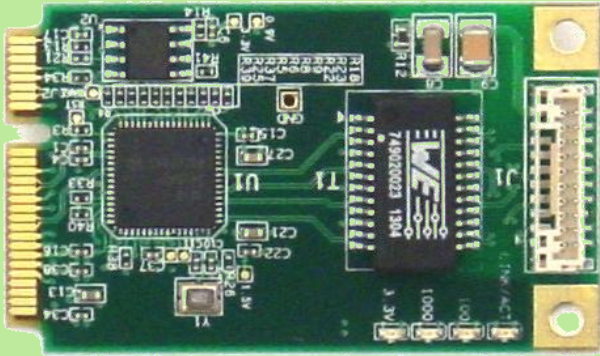


# DS-MPE-GE210



## PCIe MiniCard I/O Expansion Module with Gigabit Ethernet



- ◆ 1 Gigabit Ethernet port
- ◆ Wake on LAN
- ◆ 4 status LEDs
- ◆ +3.3VDC input power
- ◆ Latching connector for increased ruggedness
- ◆ Drivers for Windows 7, XP, and Linux 2.6.xx
- ◆ PCIe MiniCard full size form factor (50.95 x 30mm)
- ◆ Operating temperature of -40°C to +85°C

### Description

The DS-MPE-GE210 is a rugged, low cost Gigabit Ethernet PCIe MiniCard module that is ideal for adding an extra Ethernet port to any system in embedded and OEM applications.

It provides a convenient, compact, cost-effective means to add an extra gigabit Ethernet port to your embedded system. The Intel 210IT Ethernet controller provides 10/100/1000Mbps operating speed with industrial temperature range capability. The module includes link and speed LEDs as well as latching connectors for enhanced ruggedness. Wake-on-LAN functionality is supported.

The DS-MPE-GE210 product comes with the single port Gigabit Ethernet PCIe MiniCard module, a Gigabit Ethernet cable, and a hardware kit with mounting screws.

### Rugged Design

Extended temperature capability (-40°C to +85°C) enables the board to operate in environments with extreme temperature swings, such as vehicles or outdoor installations.

### Specifications

<b>Number of Ports</b>	1 10/100/1000Mbps Ethernet from Intel 210IT
<b>Wake on LAN</b>	Yes
<b>Status LEDs</b>	Link Activity 100 speed 1000 speed
<b>Power input</b>	+3.3VDC ±5%
<b>Power consumption</b>	0.46W at 3.3V
<b>Software drivers</b>	Windows 7, XP Linux 2.6.12, 2.6.27, 2.6.31, 2.6.32
<b>Operating temperature</b>	-40°C to +85°C
<b>Operating humidity</b>	5% to 95% non-condensing
<b>Form Factor</b>	PCIe MiniCard full size
<b>Dimensions</b>	50.95mm x 30mm (2" x 1.18")
<b>Weight</b>	8.5g (0.3oz)

### Ordering Information

<b>DS-MPE-GE210</b>	1 Gigabit Ethernet Port PCIe MiniCard Module with cable
<b>6980502</b>	Gigabit Ethernet cable