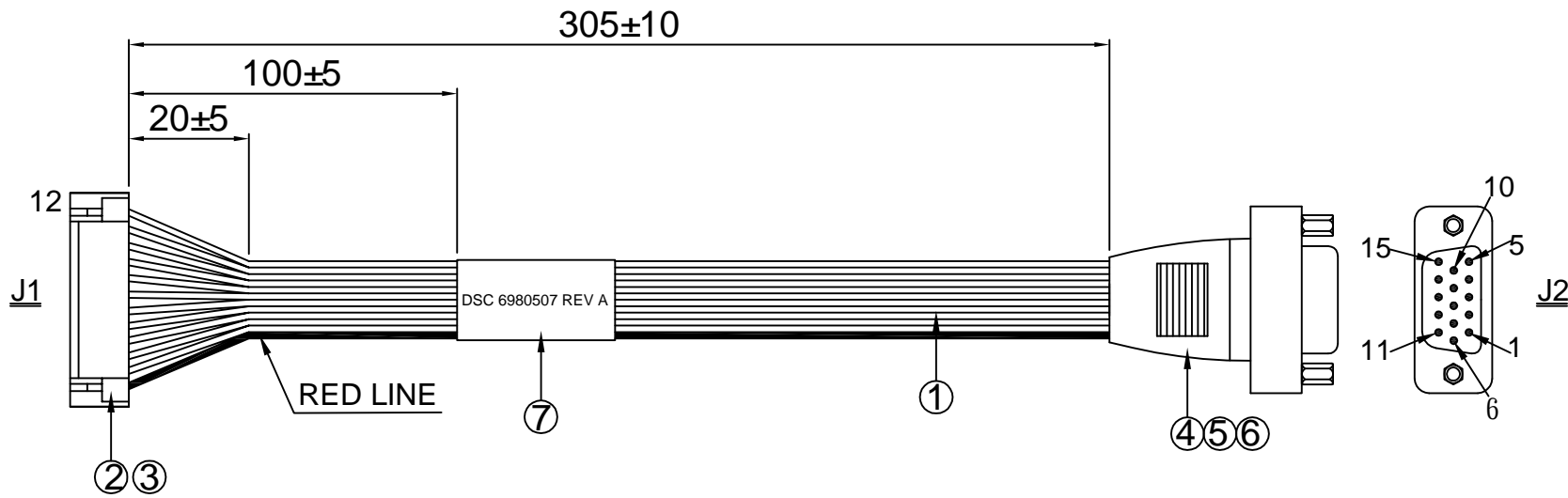
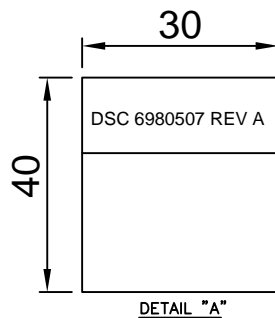


REV.	ECO. NO.	APPD
A	REL.	JHONNY 09/02'13



12	GRAY	5
11	GRAY	15
10	GRAY	12
9	GRAY	10
8	GRAY	14
7	GRAY	13
6	GRAY	8
5	GRAY	3
4	GRAY	7
3	GRAY	2
2	GRAY	6
1	RED	1
J1	WIRE COLOR	J2

WIRE CONNECTION TABLE



7	LABEL	1PC	W=30.0MM, L=40.0MM, CONTENT: SEE "A"	
6	SCREW	2PCS	MATERIAL: COPPER, NICKEL PLATED HEX SCREW H: 4.75*11.8 #4-40UNC	
5	SHELL	1PC	MATERIAL: ABS, UL94V-0, COLOR: BLACK W/NUT #4-40UNC P/N: DKN9/15	
4	HD-SUB 15F	1PC	MATERIAL: PBT, UL94V-0, INSULATION: BLACK HD-SUB 15 FEMALE, GLOD FLASH	
3	CONTACT	12PCS	MATERIAL: PHOSPHOR BRONZE, TIN PLATED WIRE RANGE: #30~#26, JST P/N: SSSL-002T-P0.2 WIRE RANGE: #32~#28, JCTC P/N: 11257TOP-2E	
2	12P HOUSING	1PC	MATERIAL: PBT, UL94V-0, COLOR: NATURAL WHITE PITCH: 1.25MM, 1X12 JST P/N: GHR-12V-S JCTC P/N: 11257H00-12P-L	E60389 E338796
1	FLAT CABLE	1PC	UL2651#28x12C, PITCH: 1.0MM, JACKET: PVC, COLOR: GRAY	E209329
No.	ITEM	Q'TY	DESCRIPTION	UL NO.

- NOTES:
- ALL DIMENSIONS ARE "MM".
  - ANY OPEN, MISWIRING, SHORT & INTERMITTENT ARE NOT PERMITTED.
  - Connection Resistance : 2.0Ω  
Insulation Resistance : 20MΩ  
Hi-POT Voltage : 300V DC  
Hi-POT Duration : 10mS
  - THE PRODUCT MUST BE COMPLY WITH THE DIRECTIVE OF ROHS.
  - PACKAGE: 1PC/BAG.



X.: ±	.XX: ±	X': ±	.XX': ±	PART NO.(INTENDED USE) 6980507 REV A	TITLE: CABLE HARNESS, VGA 1.25MM CONNECTOR TO DE15 VGA FEMALE PANEL MOUNT CONNECTOR
.X: ±0.5	.XXX: ±	.X': ±	.XXX': ±	APPD: JHONNY 09/02'13	DWG NO.: GL-GH665
				CHKD: WUZUJIAN 09/02'13	SCALE SHEET REV. NONE 1/1 A
				DR: YHTJH 09/02'13	