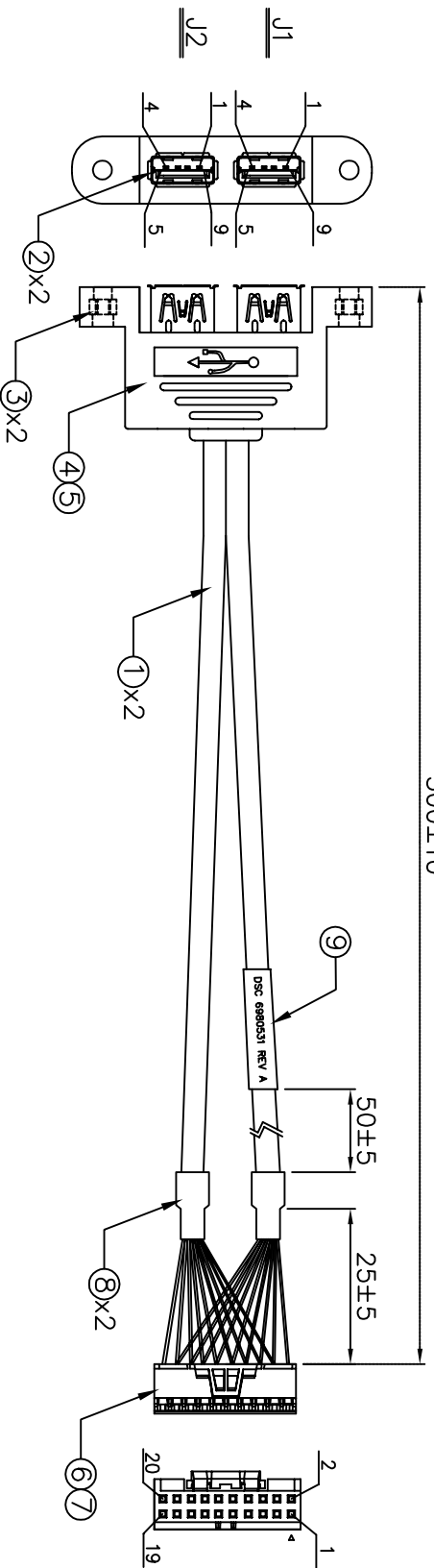
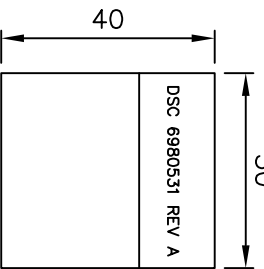


REV.	ECO.	NO.	APPD
A	REL.	LARRY	01/02/20
B	PRINT CHANGED	LARRY	02/03/20



SHELL	DRAIN	—	SHELL	DRAIN	—
9	YELLOW	TWIST	9	YELLOW	TWIST
8	BLUE	PAIR	8	BLUE	PAIR
7	DRAIN		7	DRAIN	
6	ORANGE	TWIST	6	ORANGE	TWIST
5	PURPLE	PAIR	5	PURPLE	PAIR
4	BLACK#24		4	BLACK#24	
3	GREEN	TWIST	3	GREEN	TWIST
2	WHITE	PAIR	2	WHITE	PAIR
1	RED#24		1	RED#24	
WIRE CONNECTION TABLE			WIRE CONNECTION TABLE		
J1	WIRE COLOR	J3	J2	WIRE COLOR	J3



No.	ITEM	Q'TY	DESCRIPTION
9	LABEL	1PC	W=30.0MM, L=40.0MM, CONTENT SEE "A"
8	H.S. TUBE	2PCS	H.S. TUBE COLOR:BLACK
7	CRIMP TERMINAL	18PCS	CRIMP CONTACT FCI P/N 77138-001LF
6	20P HOUSING	1PC	2MM 2X10P LATCHING HOUSING FCI P/N 10073599-020LF
5	OUTER MOLD	—	PVC COLOR:BLACK
4	INNER MOLD	—	PE COLOR:NATURAL
3	M3 NUT	2PCS	M3 NUT
2	USB 3.0 CONN	2PCS	USB3.0-9P A/F SOLDER TYPE
1	CABLE	2PCS	UL2725#28x2P+#28x1P+#24x2C, USB3.0 CABLE JACKET:PVC, COLOR:BLACK

NOTES:

1. ALL DIMENSIONS ARE "MM".
2. ANY OPEN, MISWIRING, SHORT & INTERMITTENT ARE NOT PERMITTED.
3. CONDUCTION RESISTANCE: 2Ω MAX  
INSULATION RESISTANCE: 20MΩ MIN/DC 300V
4. THE PRODUCT MUST BE COMPLY WITH THE DIRECTIVE OF ROHS.
5. PACKAGE: 1PC/BAG.



X:±	.XX:±	X':±	.XX':±
.X:±0.5	.XXX:±	X':±	.XXX':±
PART NO.(INTENDED USE) 6980531 REV A		TITLE: CABLE, USB3.0 DUAL TO 2X10 FCI LATCHING	
APPD: LARRY 02/03/20	DWG NO.: GL-G10531		
CHKD: WUZUJIAN 02/03/20			
DR: AARON 02/03/20			

SCALE	SHEET	REV.
NONE	1/1	B