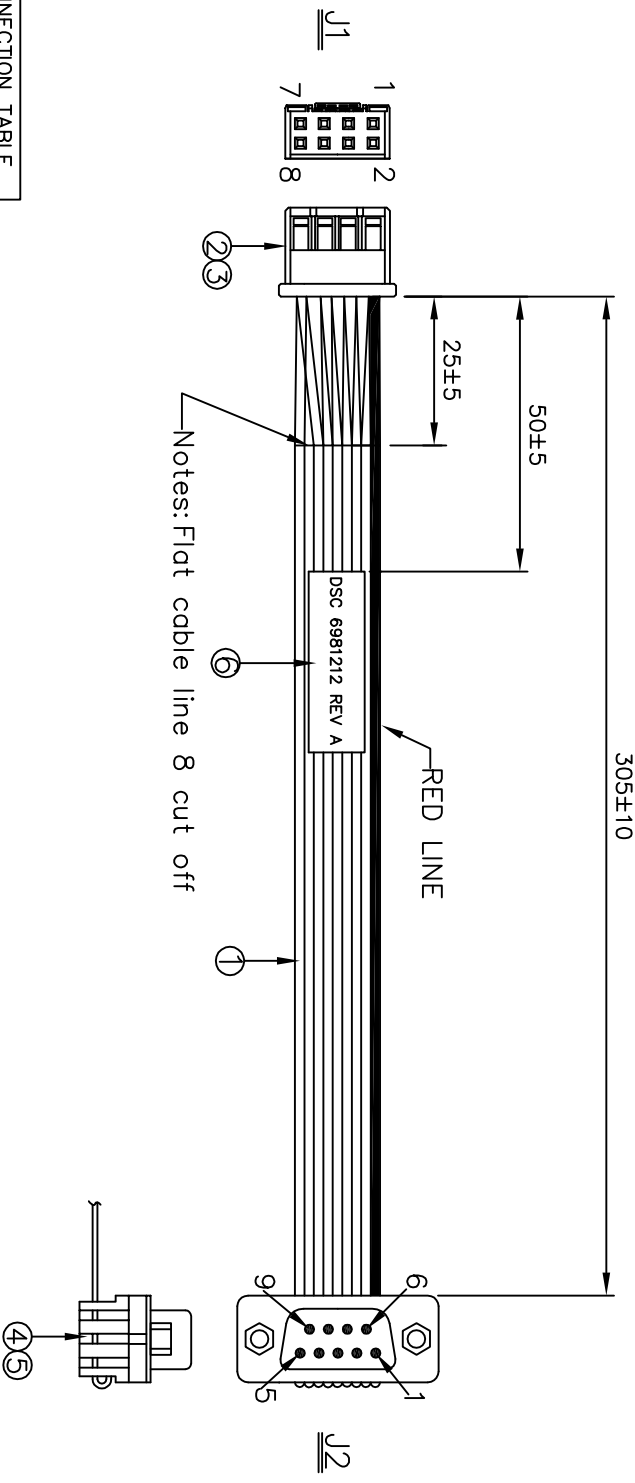
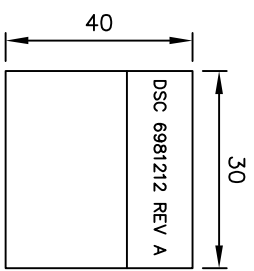


REV.	ECO. NO.	APPD
A	REL.	JHONNY 09/07/14
B	CHANGE J2 PIN ASSIGNMENT	JHONNY 09/11/14



J1	WIRE COLOR	J2
1	RED	1
2	GRAY	6
3	GRAY	2
4	GRAY	7
5	GRAY	3
6	GRAY	8
7	GRAY	4
8	GRAY	5

FLAT CABLE LINE 1
FLAT CABLE LINE 2
FLAT CABLE LINE 3
FLAT CABLE LINE 4
FLAT CABLE LINE 5
FLAT CABLE LINE 6
FLAT CABLE LINE 7
FLAT CABLE LINE 8
FLAT CABLE LINE 9



NO.	ITEM.	Q'TY	DESCRIPTION	UL No.
1	WIRE	1PC	UL2651 #28 9P GREY PH:1.27MM	E209329
2	HOUSING	1PC	2MM 2*4P UL94V-0 JST PUDP-08V-S	E60389
3	TERMINAL	8PCS	JST SPUDP-002T-F0.5 COPPER ALLOY TIN-PLATED	
4	D-SUB CONN	1PC	IDC D-SUB 09 MALE BLACK PBT UL94V-0 WITH STRAIN RELIEF HOLE #4-40UNC	
5	HEX SCREW LABEL	2PCS	HEX SCREW 4.75X11.8MM	
6		1PC	TRANSPARENT POLYESTER SEE DETAIL "A"	

X:±	XX:±	X':±	XX':±
X:±0.5	XXX:±	X':±	XXX':±

PART NO.(INTENDED USE)	TITLE: CABLE HARNESS, COM. PANEL MOUNT
6981212 REV A	2mm Connector to DB9 MALE
APPD: JHONNY 09/11/14	DWG NO.: GL-GH700
CHKD: WUZUJUAN 09/11/14	SCALE SHEET REV.
DR: WUZUJUAN 09/11/14	NONE 1/1



- NOTES:
1. ALL DIMENSIONS ARE "MM".
 2. ANY OPEN, MISWIRING, SHORT & INTERMITTENT ARE NOT PERMITTED.
 3. Connection Resistance : 2.0Ω
Insulation Resistance : 20MΩ
Hi-POT Voltage : 300V DC
Hi-POT Duration : 10ms
 4. THE PRODUCT MUST BE COMPLY WITH THE DIRECTIVE OF ROHS.
 5. PACKAGE: 1PC/BAG.