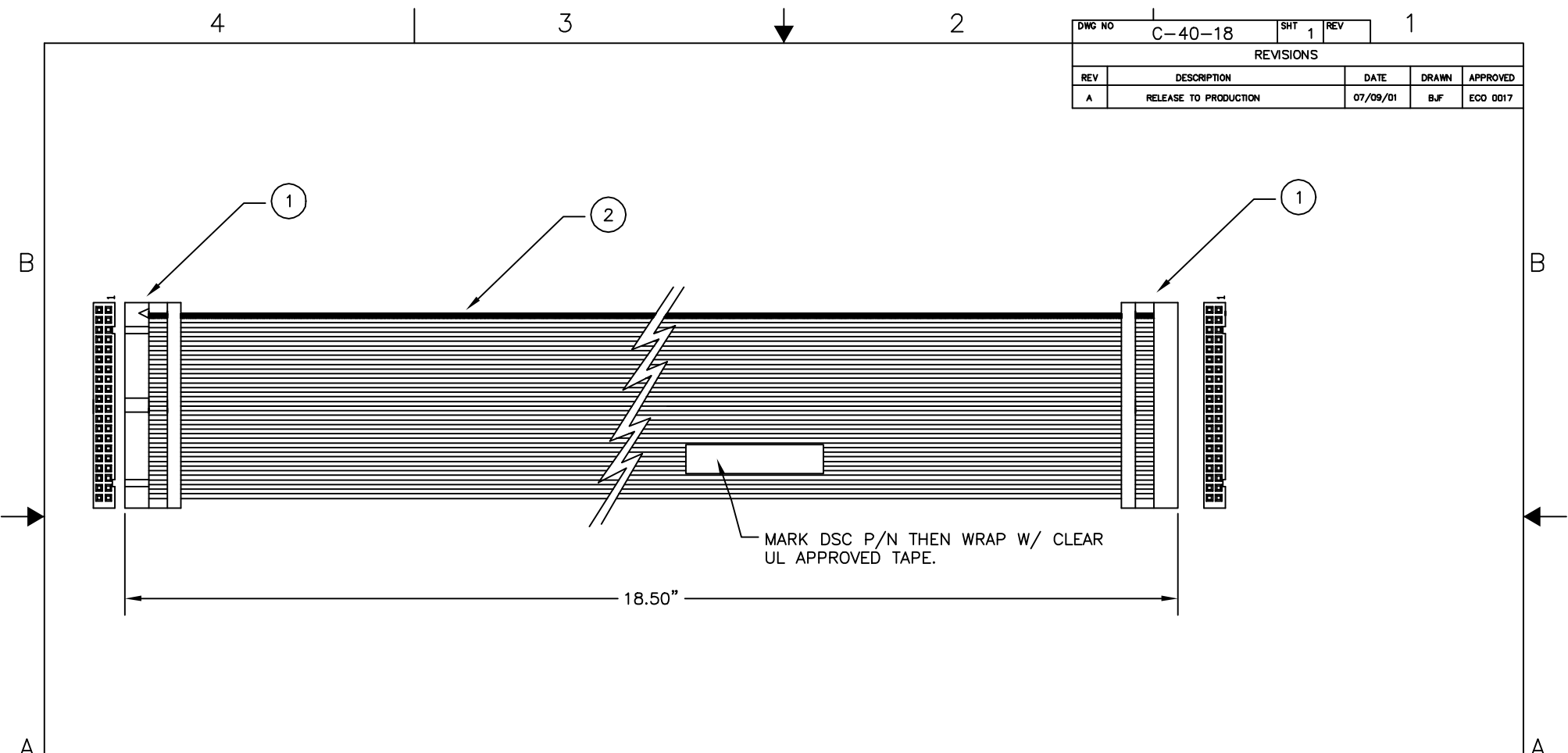


DWG NO	C-40-18	SHT	1	REV	1
REVISIONS					
REV	DESCRIPTION	DATE	DRAWN	APPROVED	
A	RELEASE TO PRODUCTION	07/09/01	BJF	ECO 0017	



MARK DSC P/N THEN WRAP W/ CLEAR UL APPROVED TAPE.

18.50"

NOTES:

1. THIS DOCUMENT CONTAINS CONFIDENTIAL INFORMATION THAT IS OWNED BY DIAMOND SYSTEMS CORPORATION AND MAY NOT BE COPIED, DISCLOSED OR OTHERWISE USED WITHOUT THE EXPRESSED WRITTEN CONSENT OF D.S.C
2. CABLE MUST MEET UL SPECIFICATIONS

2	40 COND. RIBBON CBL.	134-40	HITACHI	9.00	IN	
1	40 PIN SOCKET	1100-40	PHYCO	2	EA	
ITEM	DESC	PNO	VENDOR	QTY	UM	NOTE
UNLESS OTHERWISE SPECIFIED DIMENSIONS ARE IN INCHES						
±.015 BEND TO A BEND						
±.010 FEATURE TO A BEND						
±.010 FEATURE TO AN EDGE						
±.005 FEATURE TO A FEATURE						
±.005 FEATURE						
±.500 DEGREE FOR ANGLES						
MATERIAL		APPROVALS		DATE		
FINISH		DRAWN		6/7/01		
		CHECKED				
		ENGR				
		MFG				
		SCALE		NONE		
		DOC REV:		A		
		THIRD ANGLE PROJECTION				
		SHEET		1 OF 1		
		SIZE		B		
		DWG NO		C-40-18		
		REV		A		
<p>DO NOT SCALE DRAWING</p> <p>DIAMOND SYSTEMS CORPORATION 450 SAN ANTONIO ROAD - PALO ALTO, CA 94306</p> <p>CABLE, IDC40 to IDC40 18"</p>						